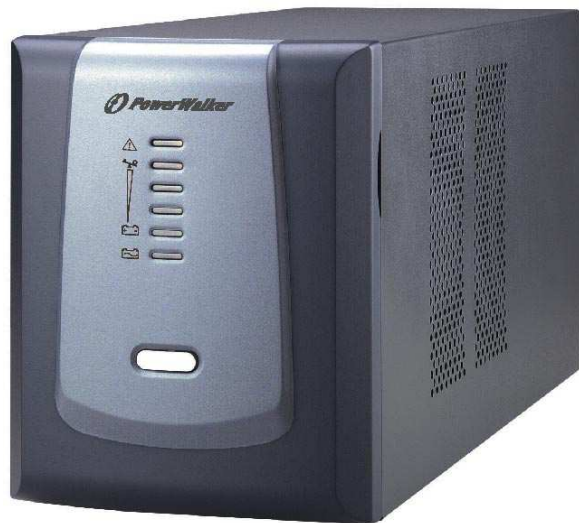


POWERWALKER

Uninterruptible Power Supply

Line Interactive VI 1000/1400/2000

User's Manual



Thank you for purchasing PowerWalker UPS. Safety information and operating instructions are included in this manual. To ensure the correct use of the UPS, please read this manual thoroughly before operate it. And save this manual properly.

1. INTRODUCTION

PowerWalker VI series is an intelligent and compact line interactive UPS which is designed to protect your personal computer or sensitive electronic equipments. The UPS is equipped with advanced microprocessor controlled and included built-in boost and buck AVR to prevent the equipment damage and data loss. The UPS can be automatically started up without AC power supplied. The special feature is that hot-swappable/user replaceable battery is easy to replace or change in case of battery. In addition, this UPS provides advanced modem or telephone line surge protection, and the small footprint tower design can be placed on your desk space or floor. It is equipped with many features that allow any attached equipment to operate longer and more reliability. PowerWalker VI series protects computer systems, servers, storage systems, and network peripherals from blackouts, power surges, and spikes.

Description of Features:

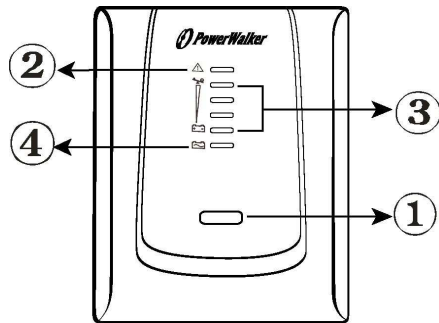
- Compact size and light weight design which can be placed on the cabinet or desk
- Utilized microprocessor control to maximize the reliability and efficiency
- Equipped with built-in boost and buck AVR to prevent the equipment damage and data loss
- Cold start capability enables UPS can be automatically turned on in battery mode during blackout
- Include discharge, overcharge, and overload protection
- Provides advanced telephone/fax or modem surge suppression protection
- Built-in RS-232 with connecting intelligent monitoring software
- User-replaceable batteries allow on-site battery replacement
- USB available(optional)

2. SAFETY REQUIREMENTS

- Please save this manual properly. This manual includes important safety information. Please read it carefully and thoroughly before operating the UPS. Comply with all the warnings and operating instructions on the unit and in the manual strictly.
- To reduce the risk of electric shock, the user must disconnect the UPS from the mains supply before installing any cable.
- To reduce the risk of electric shock. Do not attempt to disassemble the UPS. This UPS is no user serviceable parts inside. Please contact qualified service personnel to do any service.
- Do not connect with laser printers, cosmetic appliances, medical equipments, microwave ovens, vacuum cleaners or heavy duty hardware to UPS because they take too much power.
- Do not dispose of batteries in a fire. They may explode.
- Do not open or mutilate batteries. They contain an electrolyte that is toxic and harmful to the skin and eyes.
- Do not allow liquid or foreign object to enter inside of UPS.
- Do not block off ventilation openings in the UPS system's housing.
- Do not place the UPS near water or in environments of excessive humidity.
- Remove personal metal items such as rings, bracelets, necklaces, and watches when working with batteries. Batteries can produce a short-circuit current high enough to make metal melt, and could cause severe burns.
- When replacing batteries, replace with the same number of the sealed lead-acid batteries.

3. OVERVIEW

Front Panel



1. ON/OFF Button

Press the On/Off button to turn on or off

2. Fault LED

- The Fault LED will be on and beeps continuously when the UPS is at faulty condition.

3. On-Line Indicator

- Load Level LEDs

Backup Indicator

- Battery Capacity LEDs

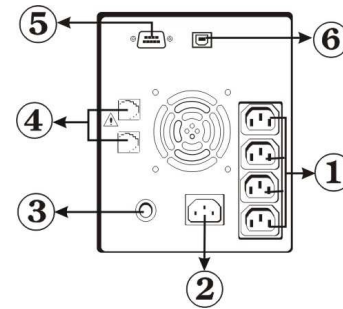
4. On-Line Indicator

- The green light indicator illuminates when the input line voltage is normal

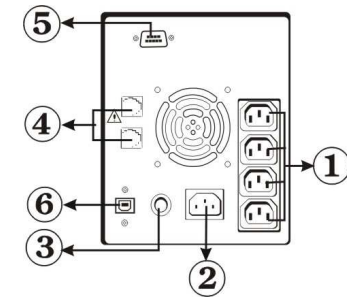
Backup Indicator

- The green light indicator flashes when the internal battery is being used

Back Panel



1000VA



1400VA/2000VA

1. Battery Power Supplied Receptacle

The power supplied receptacles are used for battery to power up your equipments while AC is failure.

2. AC Input Power Receptacle

The power receptacle is used to plug in the power cord that provides power to the UPS

3. Circuit Breaker

The circuit breaker is used to protect your equipment against the event of short-circuit or system overload

4. Telephone/Fax/Modem Surge Suppression Port

This surge suppression port is used to protect the telephone or modem line while connecting the INTERNET service

5. RS-232 Communication Port

This communication port is used to communicate with a computer or modem and support the operating systems

6. USB Communication Port (optional)

This USB communication port is used by downloaded software

4. INSTALLATION

Before the installation, please ensure the power switch on the UPS is in “OFF” position, and the voltage of the AC utility source corresponds to the identification label on the rear panel.

1. Inspection

Inspect the UPS upon the receipt. If there is any damage, please report it to dealer immediately. The packaging is used recyclable material, please save it for reuse or dispose of it properly.

2. Placement

Install the UPS in a protected area within a temperature range from 0 - 40°C and relative humidity of 0 - 90% without condensing. And place the UPS in a location free from excessive dust and chemical fumes. Please notice that the UPS voltage and power rating match to the line voltage and load requirements.

3. Connection

Connect the power cord to the utility power to power up the UPS. Press “ON” button to turn on the UPS, the green light indicator illuminates that AC utility voltage is present.

4. Charge the Battery

Charge the battery automatically when UPS is connected to utility power. Some charges may be lost. It is recommended that the battery will be re-charged for at least 8 hours before using the UPS.

5. Connect the Computer

Connect the interface cable from your computer to the output receptacles on the back panel of the UPS.

6. Connect the Telephone/Modem Line

Connect a single telephone cable into the “IN” telephone/modem surge suppression port on the back of the UPS. Require another length of telephone cable to connect into “OUT” telephone/modem port on the back of UPS to the modem input socket.

7. Connect the RS-232/USB*Communication Port

Connect a RS-232 serial cable/USB cable from RS-232/USB communication port on the back of the UPS to Computer Systems that will be auto detected.

8. Green Mode Function(1000VA only)

“Green mode” enables to save the power if none of the load is connecting.

9. DC Start Function

When the power is not supplied from AC utility, DC start function will be started up automatically.

10. Switch Off

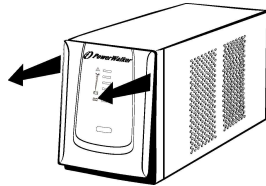
Press “OFF” button to turn off the UPS after use or test.

**optional*

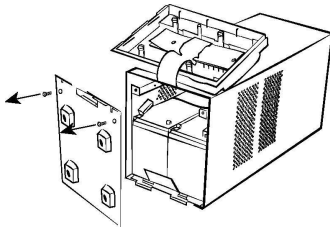
5. BATTERY REPLACEMENT

Before battery replacement, please ensure the power switch on the UPS is in “OFF” position.

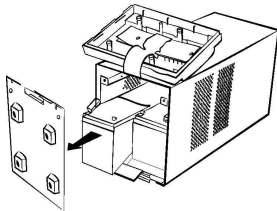
Step 1: Remove the front panel of the UPS



Step 2: Unscrew and remove the battery bracket



Step 3: Disconnect the battery cable and pull the battery out onto a flat area



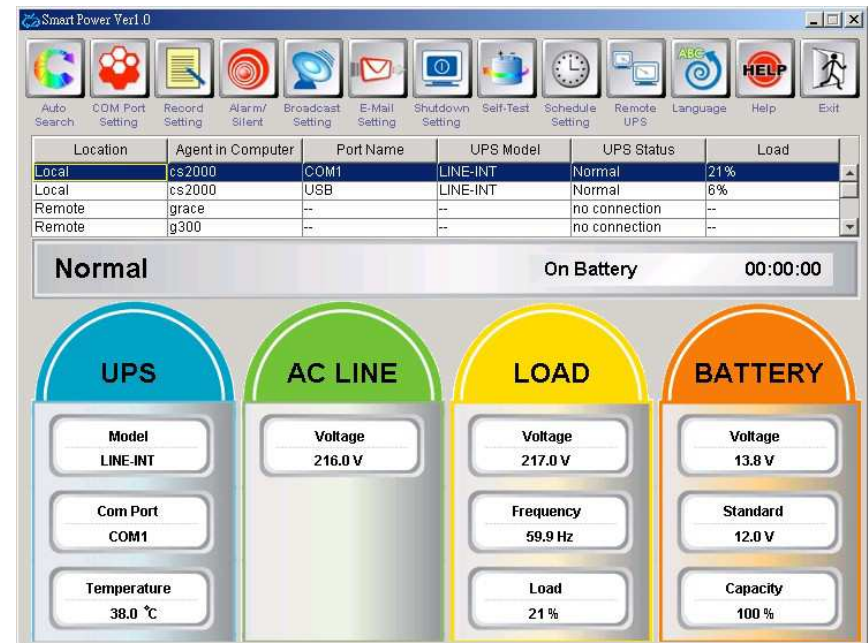
Step 4: Slide the new battery and reconnect the battery cable by screwing up the battery retaining battery bracket

Step 5: Close and reinstall the front panel of the UPS

6. MONITORING SOFTWARE

After the UPS has been installed, you must install the software(Smart Power) that came packaged with your UPS. Smart Power monitoring software performs the monitoring and controlling functions. This software displays the status and diagnostic symptoms on the monitor. In case of the power failure, it provides the auto shutdown for the computer.

If you download the software from Internet, please key the serial number: 726T25-4791-2N39546.



7. TECHNICAL SPECIFICATION

MODEL		PowerWalker 1000	PowerWalker 1400	PowerWalker 2000
CAPACITY	VA/W	1000VA/600W	1400VA/840W	2000VA/1080W
INPUT	Voltage	110/120VAC or 220/230/240VAC		
	Voltage Range	89-145VAC or 170-280VAC	85-140VAC or 162-290VAC	
	Frequency	45-65 Hz (Auto Sensing)		
OUTPUT	Voltage (Batt. Mode)	110/120/220/230/240VAC +/-10%		
	Frequency (Batt. Mode)	50Hz or 60Hz +/-1 Hz		
	Output Waveform (Battery mode)	Modified Sinewave		
BATTERY	Battery Type	12V7Ah x 2	12V9Ah x 2	
	Backup Time (at a PC load with 15" monitor)	40 minutes	25 minutes	26 minutes
	Recharge Time	8 hours to 90% after complete discharge		
	Transfer Time	Typical : 4-6 ms		
INDICATOR	AC Mode	1 st green LED lighting 2 nd to 5 th green LEDs lighting indicating load level		
	Backup Mode	1 st green LED flashing 2 nd to 5 th green LEDs lighting indicating battery capacity		
	Fault	Red LED lighting		
AUDIBLE ALARM	Backup Mode	Sounding every 10 seconds		
	Low Battery	Sounding every second		
	Overload	Sounding every 0.5 second		
	Fault	Continuously sounding		
PROTECTION	Full Protection	Discharge, overcharge, and overload protection		
PHYSICAL	Dimension DxWxH (mm)	368.3 x 140.2 x 180.4		
	Weight (kgs)	13.6	14.2	16
ENVIRONMENT	Noise Level	Less than 45dB		
INTERFACE	Smart RS-232	Windows family, Sun Solaris, IBM Aix, Compaq True64, UnixWare, FreeBSD, HP-UX, Linux and MAC		
	USB Port (Option)	Windows 98/2000/ME/XP		

8. TROUBLE SHOOTING

To call for service, please have the model, serial number, and description of the problem available.

PROBLEM	POSSIBLE CAUSE	SOLUTION
NO LIGHT (UPS NOT ON)	1. The power switch is in "OFF" or not pressed	1. Press power switch to turn on.
	2. The voltage for battery is weak	2. Re-charge the UPS at least 8 hours.
	3. Battery failure	3. Replace with the same type of battery or call for service.
	4. Power Connection loses	4. Check the input power and replug it again
BUZZER BEEPS CONTINUOUSLY	1. Overload of the UPS.	1. Remove the noncritical load or call for service.
BACKUP TIME IS SHORT OR ALWAYS IN "BATTERY MODE"	1. Battery failure	1. Replace with same type of battery or call for service.
	2. AC fuse may be burnout.	2. Replace fuse or call for service.
	3. Battery is not fully charged.	3. Re-charge the UPS at least 8 hours.
	4. Power Connection loses	4. Check the input power and replug it again